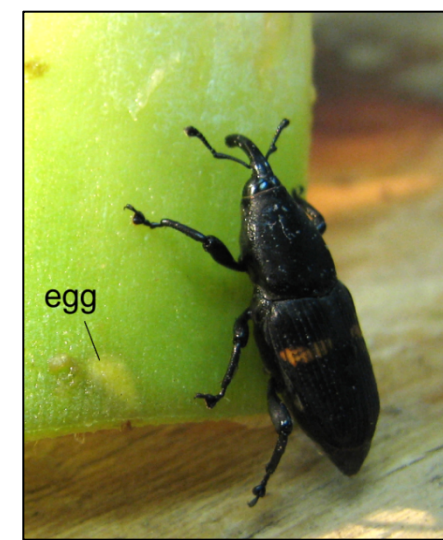


THE MEXICAN BROMELIAD WEEVIL

The Mexican bromeliad weevil, *Metamasius callizona*, is an invasive bromeliad-eating weevil in Florida that is destroying native bromeliad populations. The weevil is from Mexico, Guatemala, and Belize. It came to Florida on shipments of ornamental bromeliads, and in 1989 it was discovered on ornamental bromeliads in a grower's greenhouse. It was too late to eradicate the weevil because it had already become established on native bromeliad populations. Since 1989, the weevil has spread throughout Central and South Florida.

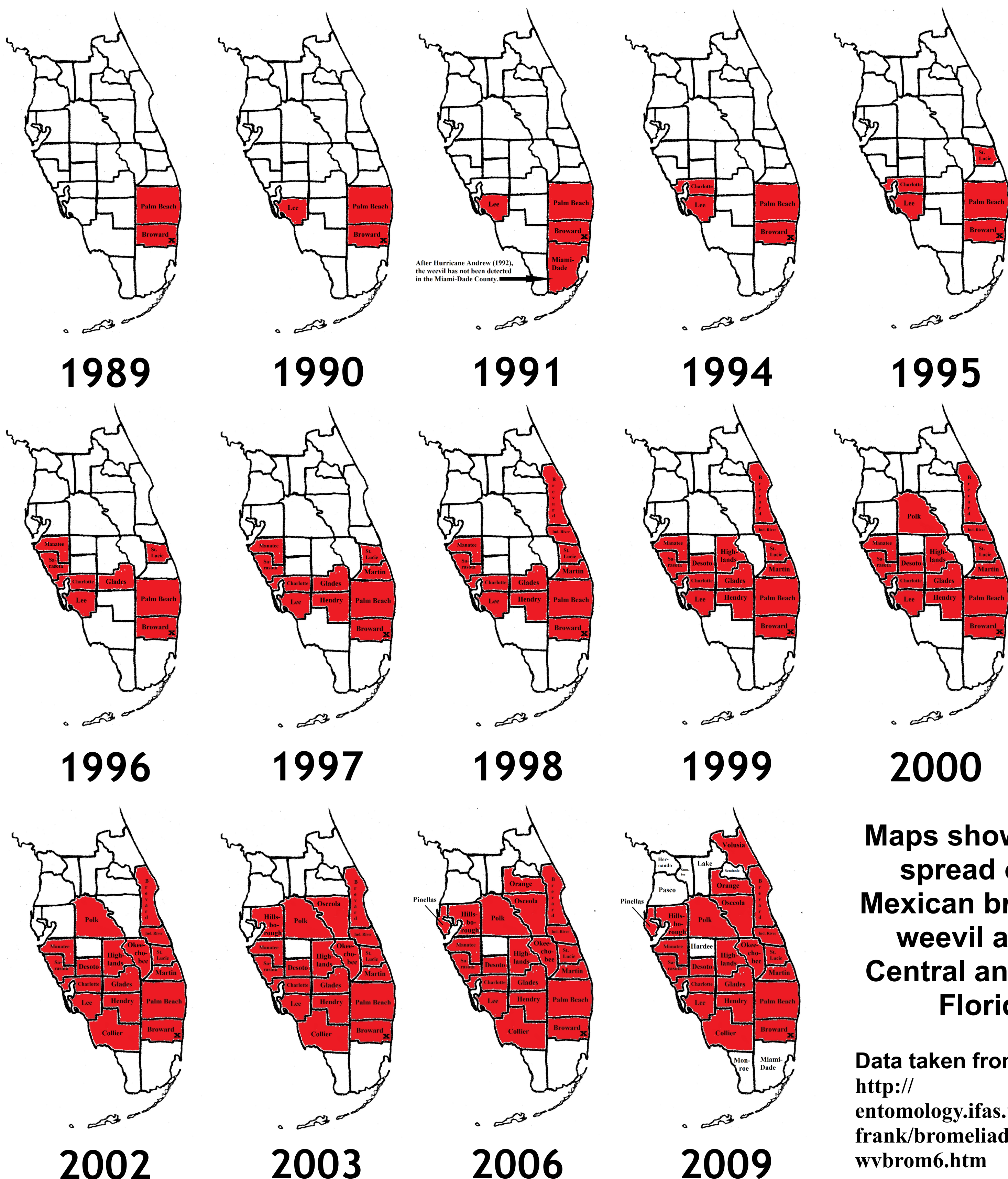


Mexican bromeliad weevil, *Metamasius callizona*



The Mexican bromeliad weevil has four life stages. The larva is the life stage that kills the bromeliad.

SPREAD OF THE MEXICAN BROMELIAD WEEVIL IN FLORIDA



Maps showing the spread of the Mexican bromeliad weevil across Central and South Florida.

Data taken from:
<http://entomology.ifas.ufl.edu/frank/bromeliadbiota/wvbrom6.htm>

THE MEXICAN BROMELIAD WEEVIL IN FLORIDA

Teresa M. Cooper

University of Florida, Entomology and Nematology Department, Gainesville, Florida

This research is in part being funded by the Florida Council of Bromeliad Societies